

How to find us

Glow-worm Training Head Office Belper

From the M1

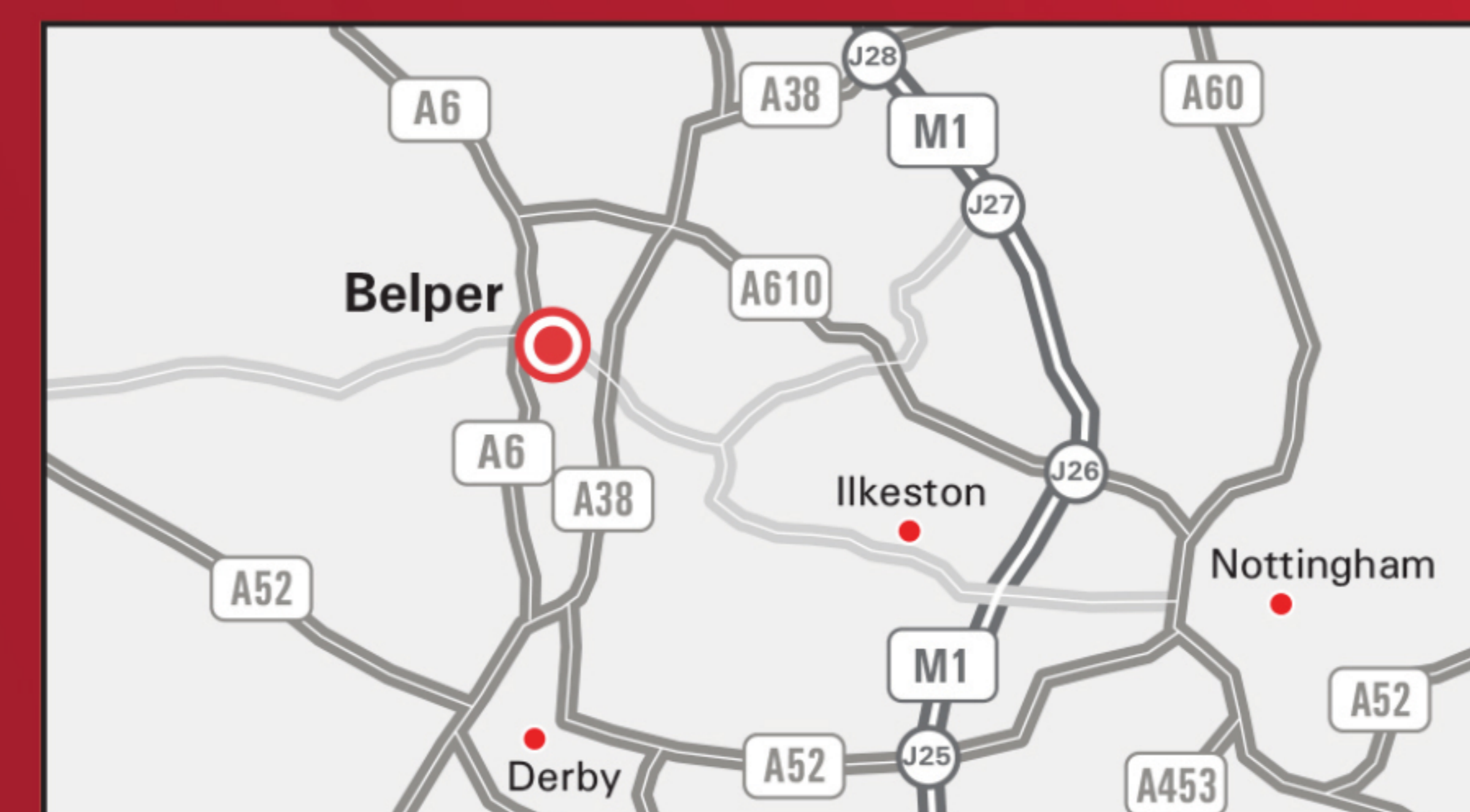
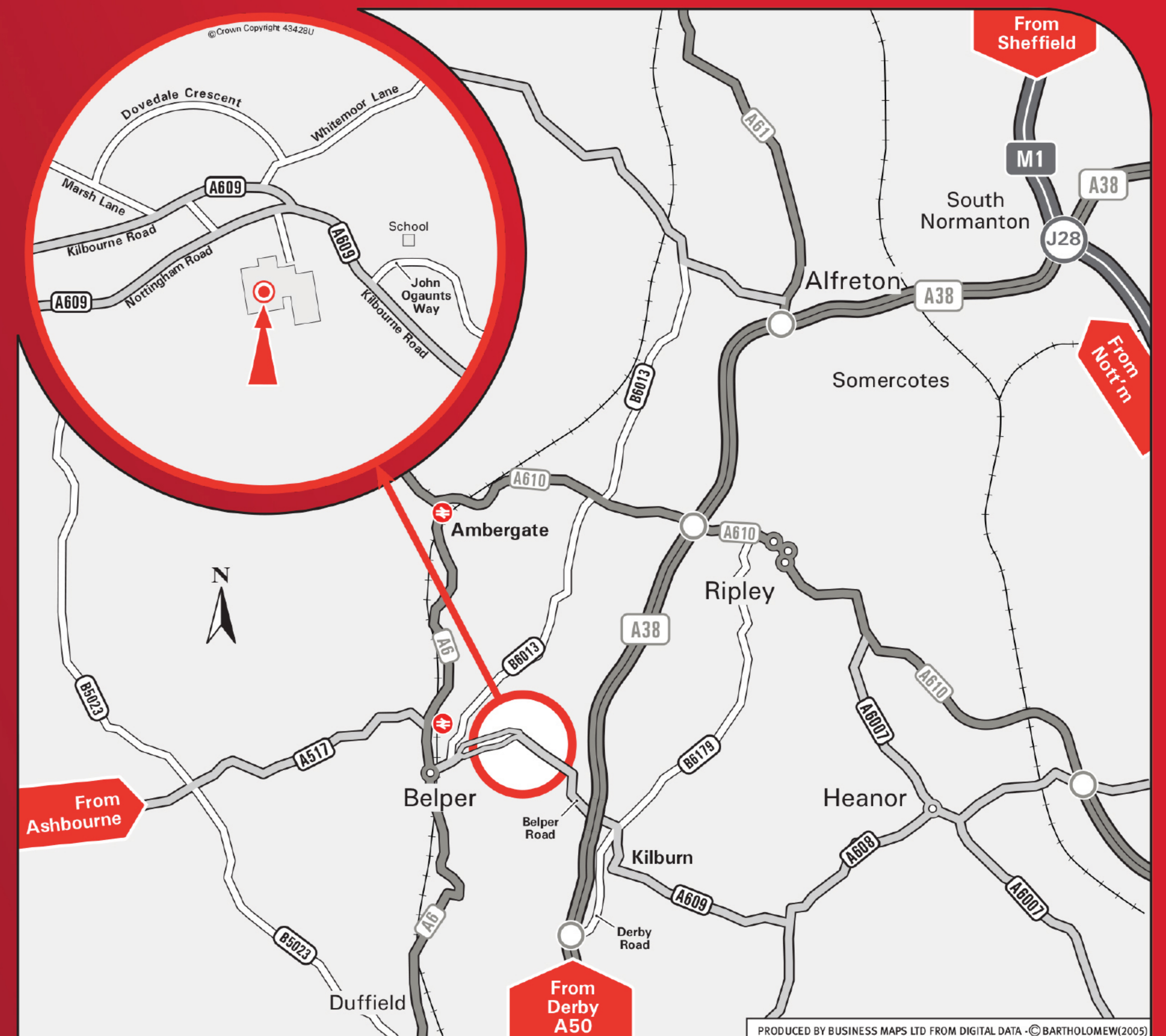
- Leave the M1 at Junction 28 (signed Mansfield, Matlock & A38).
- Join the A38 following signs for Derby and Matlock.
- Continue on the A38 until the junction with the B179.
- Join the B179 (Derby Road) following signs for Kilburn & Belper.
- Remain on the B179 until the junction with the A609.
- Turn left onto the A609 following signs for Belper.
- Pass under the A38 and continue onto Kilburn Lane.
- Join Nottingham Road. We are located on the left-hand side (see inset).

From Derby

- Leave the City Centre via the A6 (Duffield Road).
- Continue on the A6 for 2 miles until the junction with the A38.
- Join the A38, heading north towards Belper.
- Continue on the A38 until the junction with the B6179.
- Join the B6179 (Derby Road) following the signs for Kilburn & Belper.
- Remain on B6179 until the junction with the A609.
- Turn left onto the A609 following signs for Belper.
- Pass under the A38 and continue onto Kilburn Lane.
- Join Nottingham Road. We are located on the left-hand side (see inset).

By Train

- Belper station is served by trains from Derby and Matlock



Vaillant Training Head Office

Nottingham Road, Belper, Derbyshire, DE56 1JT

Tel: 0345 601 8885 www.glow-worm.co.uk

Glow•worm

Keeping Britain Glowing