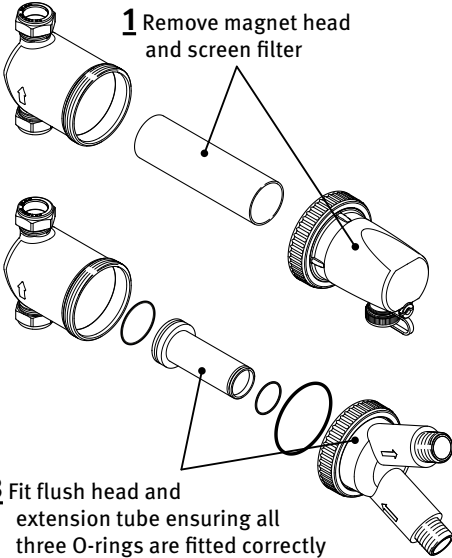
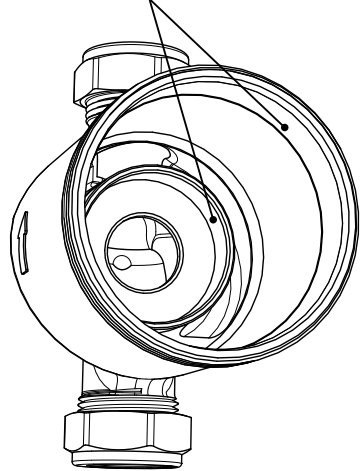


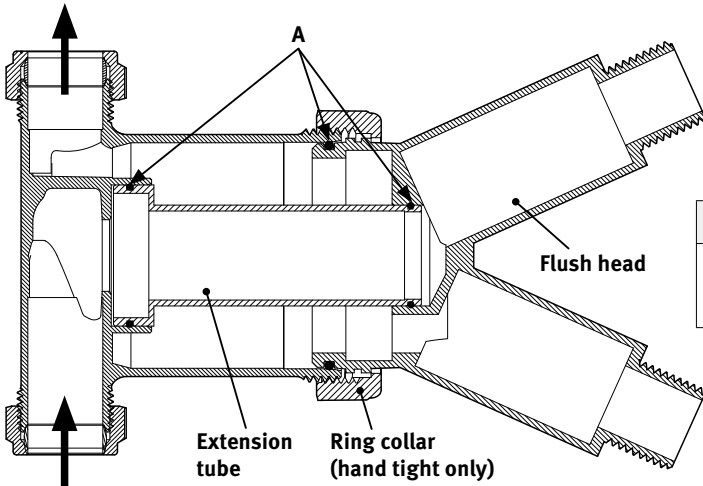
# Glow-worm flush and fill port accessory



**2** Wipe sealing surface with clean soft cloth and water to remove any debris build up. A small amount of silicone oil or grease can be used to lubricate. (No mineral based oil) **DO NOT USE ABRASIVES**



**3** Fit flush head and extension tube ensuring all three O-rings are fitted correctly and ring collar is hand tightened only. **DO NOT OVERTIGHTEN**



SPARE PARTS		
A	'O' ring (pack of three)	GW22WASH (order via Club Energy)

## Glow-worm

Vaillant Group UK Ltd.  
 Nottingham Road, Belper, Derbyshire DE56 1JT  
 Telephone 0345 602 2922  
 enquiries@glow-worm.co.uk  
 www.glow-worm.co.uk